



Herman B Wells Center for Pediatric Research

Volume 6, Issue 2

“Connecting Research with Kids”

December 2003

Quarterly Publication sponsored by the Center of Excellence in Molecular Hematology (NIDDK)



MORE SPACE FOR PEDIATRIC RESEARCH

After many years of planning and with generous funding from the Riley Children’s Foundation (RCF), the Wells Center for Pediatric Research now occupies the third *and* fourth floors of the Cancer Research Institute. This is in addition to the space at Riley Hospital.

Several labs previously located at Riley Hospital and some labs from the fourth floor of the Cancer Research Institute, moved to the newly renovated third floor. The renovated space provides the Wells Center with an additional 14,400 usable square footage, which allows the existing research programs to expand as well as provides sufficient space for future areas of research, such as Hematology/Oncology, for which we are currently recruiting.

In addition to the new space, a much needed face lift is nearly complete in our Riley location. With the help of an interior decorator, the walls were custom painted with artwork and lighting fixtures added. The final touch to the Riley location will be a planned expansion of the Pulmonary program.

The RCF and the Wells Center have something very special in common; a passion for the well-being of children. Together, the RCF and Wells can and will make a difference to children, starting right here in Indiana.

What’s inside...

Wells Center	1
Community Outreach	2
What’s Happening?	3
Grants, Honors, Awards, Appoint- ments, Promotions	4
Wells Insider	5,
Department of	6
Pediatrics Ranked #13	
Wells Publications	7,
Pubs continued	8
Announcements, Facility Facts	
Out & About	9
Seminar Schedules	10
Faculty Retreat	
Floor Meeting Schedule	11
Role of the Wells Center Core Team	12



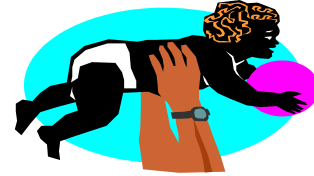
Riley Hospital for Children

Cancer Research Institute



COMMUNITY OUTREACH SPONSORING RILEY FAMILIES

By Laura Oxford



Community outreach is a very important part of the Wells Center. In the spring, through Molecular Medicine In Action (MMIA) Day, we introduce young Hoosiers to bench research, as well as Indiana University as both a school and potential employer. In the summer we offer a ten week internship to college students and wrap up the program with a very exciting poster presentation and competition. In December, however, we turn our heart towards ailing children and their families.

For many years, the members of the Wells Center have come together to sponsor families who have children receiving treatment at Riley Hospital. We recognize that the emotional and financial burden of having a sick or dying child is immeasurable. More often than not, a parent has to quit working or drastically reduce their hours in order to bring their child to Riley. The cost of phone calls, prescription medications, gas, lodging and meals can be exhaustive.

Our desire is to bring some much needed financial relief, as well as joy and hope. Details on this program will be provided to you very soon. In the meantime, let's meet our two patients and their families.

Our first patient is a precious 4 month old baby boy born one month early. Though a preemie, his early birth was not the concern. While in utero it was discovered that he had *cystic hygroma*, a life threatening condition. In his case, he has a cystic mass comprised of abnormal lymphatic vessels that compresses his airway. Our little boy is a thriving Riley patient working towards the transition home.

Mom is very excited to get home with her first born child, but unfortunately, since she has been at Riley everyday since his birth, she hasn't had the time or extra funds to shop or prepare her home. I'm sure we can help make their homecoming a very happy one.

Our second patient is a darling 6-year old girl who has Cystic fibrosis (CF) and is a regular Riley patient. She is one of four children, all girls! This family can use all the kindness and generosity we can offer.

According to the website *Cff.org* "Cystic Fibrosis (CF) is a genetic disease affecting approximately 30,000 children and adults in the United States. A defective gene causes the body to produce an abnormally thick, sticky mucus that clogs the lungs and leads to life-threatening lung infections. These thick secretions also obstruct the pancreas, preventing digestive enzymes from reaching the intestines to help break down and absorb food."

Currently, there is no cure for CF, however, aggressive research, including some clinical studies right here at Riley, are making great strides. Researchers, such as those in our community, are working hard to ensure that all CF children will grow up and have a wonderful and long life.

To learn more about Cystic Fibrosis or Cystic Hygroma please visit the web at www.cf.org and www.my.webmd.com.

For additional information on the community outreach programs hosted by the Wells Center for Pediatric Research please visit our website at www.iupui.edu/~wellsctr.



WHAT'S HAPPENING AT WELLS

INTERNATIONAL PITCH-IN



When? Thursday, December 18, 11AM to 1PM

Where? R4 Building

Cancer Research Institute Auditorium

What? International Pitch-In

Why? To share food and conversation!

Come join us for our annual International pitch-in!! Bring a dish (with food in it!), a smile and a hearty appetite. Be prepared to eat some of the most delicious foods you've ever had.

Please bring your food or drinks to the auditorium by 10:45 a.m.

TOUCHING HEARTS

BY LAURA OXFORD

Chris Lindley, our Wells Center Receptionist, doesn't just answer phones and fix the photocopier and fax machines, she also greets visitors. More recently, she had a moment to talk about the Wells Center and Riley Hospital to a vendor. Chris' story was apparently so heartfelt that the visitor immediately signed up to volunteer at Riley.

It pays to have kindness in our hearts and to share this with others, especially where our children are concerned.

Job well done, Chris!!



MOVED ON. . .

We wish that everyone could stay here at the Wells Center, but sometimes life calls people other places; sometimes other careers. Here's just a few that we are aware of.

- ◆ Karla Biberstine-Kinkade, formerly of the Dinauer lab, teaching junior high school.
- ◆ Donald Durden, Wells Center Investigator, and lab members Pradip De, and Nandini Dey relocated to Emory University School of Medicine.
- ◆ Mik Rinne, formerly of the Kelley Lab, Ph.D. awarded, Department of Biochemistry and Molecular Biology, IUSOM. Currently attending IUSOM in the MD program.
- ◆ Jingdong Su, formerly of the Durden lab, ComChem Technologies, Inc., Indianapolis, IN.
- ◆ Yi Xu, formerly of the Kelley lab, Pfizer, Detroit, MI.
- ◆ Akira Yamauchi, formerly of the Dinauer lab, Assistant Professor at the University of Tokyo.

TEN YEARS AT WELLS

Robert Hollins, Facilities Core, recently celebrated his 13th years with the university and his 10th year here at Wells. He extends his appreciation to Joel Trammell, who guided him on his career path, to Karen Correll and all the investigators, lab members and staff. He looks forward to many more years here.

A BABY WAS BORN

Christophe Marchal, Dinauer lab, and his wife welcomed their second child, Colleen Alexia, on July 21. Colleen weighed in at 5lbs.

GRANTS

Kristin Chun

- Principal Investigator, Biomedical Research Grant, “Role of *CUL4A* and ubiquitin in regulating hematopoiesis.”

Wade Clapp

- Principal Investigator, National Cancer Institute, supplemental grant, “Neurofibromatosis Type 1 Gene Regulates Myelopoiesis.”
- Principal Investigator, Department of Defense, “The Role of Schwann Cell-Mast Cell Interactions in Neurofibroma Formation.”

Mark Kelley

- Principal Investigator, National Cancer Institute, new RO1, “Therapeutic/mechanistic role of APE1 in germ cell tumors.”

Karen Pollok

- Principal Investigator, contracts with Lilly Research Laboratories, Eli Lilly and Company, “In vivo tumor modeling of lymphoma in immunodeficient mice” and “In vivo tumor modeling of glioblastoma in immunodeficient mice.”
- Co-Investigator, SBIR/NIH subcontract “A novel frozen storage system for cord blood stem cells.”
- Principal Investigator, Biomedical Research Grant, “Alkylator-Resistant Hematopoietic Stem Cells.”

Jeff Travers

- Principal Investigator, National Institute of Health, competing RO1 renewal, “Platelet Activating Factor and Epidermic Cytotoxicity.”



APPOINTMENTS & PROMOTIONS

Please join The Wells Center in congratulating the following faculty for their recent promotion, appointment, or nomination.

Becky Chan

Assistant Scientist, HB Wells Center for Pediatric Research, Department of Pediatrics, Section of Neonatal-Perinatal Medicine.

Mary Dinauer

Chair, Gordon Research Conference on Phagocytes 2005.

Editorial Board Member, Blood.

Scott Goebel

Assistant Professor of Pediatrics, Department of Pediatrics, Section of Pediatric Hematology/Oncology.

Mark Kelley:

Professor, Department of Pharmacology and Toxicology, Indiana University School of Medicine.

AWARDS

Travel Scholarship

Post-doctoral fellow Veerendra Munugalavadla, Kapur lab, was awarded a travel scholarship to attend the American Society of Hematology meeting to be held this month in San Diego, California.

Walther Cancer Institute award

Mikael Rinne, Kelley lab, a combined degree student who recently completed his doctoral studies, received a \$5000 scholarship award.

Research Award

Rajit Basu, formerly of Merv Yoder's lab, was awarded the Lyman T. Meiks Research Award. Rajit will continue his training as a pediatric resident at Children's Memorial Hospital in Chicago.

WELLS INSIDER

By Laura Oxford

New space, new faces, farewells; it's been a busy year.

"Space" has been an issue in the Wells Center for many years, but in October that issue was finally put to rest with the acquisition of the third floor of the Cancer Research Building. Over 14,000 square footage was added to our center including a centralized space for much of the business staff and an upgraded post-doc room.

The renovation project was very intricate and time consuming, not to mention frustrating. Fortunately for us, when Joel Trammell resigned we were able to quickly recruit Karen Correll.

Karen has several years in corporate and scientific environments and brings with her not only practical facility skills, but also valuable business and management expertise.

Unfortunately, Karen's introduction to the Wells Center was the renovation and move. She worked 14 hour days to get the third floor up and running. Karen is excited about the completion of the third floor and offered the following comments. "The newly renovated third floor turned out beautifully and will provide the Center an exemplary addition of space to conduct our research. The unpacking and installation of equipment for the floor is complete providing us with a functioning floor in which research has promptly resumed. As time passes and we settle into our new space, undoubtedly we will be presented with issues and situations that may take time to fix, complete or work through. Please be patient and understand that all issues and requests are important and will be addressed as time permits. A big thank you goes to the faculty, lab personnel, administrative team, core facility team, and all the others who helped with the move. It was well orchestrated and executed by all participants. We could not have done it without all of you!"

She hasn't turned in her badge or keys yet, so I think she's staying. Karen's team includes Ernest Atwood, Robert Hollins, and new team member Charles Wade.

We thank you, Karen, and your team, for jumping into the fire with both feet, and working so hard to organize the third floor to get it operational.

As we welcome Karen, we bid a fond farewell to Joel Trammell, who was the Associate Director of Facilities for the Wells Center for 12 years. Joel accepted a position in the Dean's Office here on the IUPUI campus. We extend our appreciation to Joel for the countless hours that he put into the renovation project, as well as his many other contributions to the Wells Center and its outreach programs.

Another special person who recently left the Wells Center is Tina Noonan. Though she is no longer working for Wells, she continues to be a supporter of Riley and of the research conducted here at the Wells Center. Like Joel, Tina was one of the first support persons to join Wells. It was a very difficult decision for her, however her new position as Associate Director for Corporate Affairs allows her to use every skill she has ever mastered, as well as her graduate education.

While we miss Tina, she did a fantastic job in selecting her successor, Jean Mercer. Tina didn't want "just" a business person, she wanted someone who would care about pediatric research and the Wells Center the way that she did. We hit bingo with Jean.

Jean is an IUPUI veteran having worked as the Assistant Business Manager for the Division of Biostatistics and the Division of Hematology/Oncology, and as the Assistant Director for Sponsored Program Administration with the Office of Research and Sponsored Programs. Needless to say, Tina left us in excellent hands. Jean's background offers extensive grant experience, as well as post award accounting. I don't think we will have any problems keeping her busy. We welcome Jean and hope that her time here is long and rewarding.

Continued on page 6

WELLS INSIDER *continued*

Also joining us are three new faculty members. Please welcome **Kathy Bethin, M.D., Ph.D.** Endocrinology; **Simon Conway, Ph.D.**, Developmental Biology; and **Tony Firulli, Ph.D.**, Developmental Biology.

Kathy's research is focused on elucidating the mechanisms that initiate normal labor and how these mechanisms malfunction to cause preterm labor. Together with her lab members, their work focuses on the mouse model, as the mouse allows us to manipulate genes of interest *in vivo*.

Kathy joined the Wells Center because the networking that develops within a research center is key in helping new investigators to become successful. She was really impressed at the large number of people that attended her faculty candidate seminar and asked interesting questions. Kathy is currently holding down Wells West with several veteran Wells Center Investigators.

Research in **Simon's** lab has a common aim which is to understand embryological congenital heart defects. Using various transgenic and targeted knockout mice mutant models, his lab is looking at when cardiac development first goes wrong in utero and then attempting to correct the various heart defects. If these congenital defects can be prevented/cured within the mice mutant, then we hope to apply the knowledge gained to patients.

He joined the Wells Center to be a part of a successful collaborative group and to do great science. Simon and his lab are now located on the third floor of the Cancer Research Institute (Wells East-3).

Anyone who has met **Tony** knows that he has a quite a sense of humor; so his remarks should not surprise you.

Tony says that his scientific mission is to "fool people into thinking that he knows stuff *or* understanding the molecular mechanisms (transcriptional control) controlling cardiac cell specification and differentiation."

The opportunity of interacting with a cohesive group of cardiovascular scientists is what brought Tony to Wells.

In addition to our new faculty members, we congratulate **Scott Goebel, M.D., Ph.D.**, Hematology/Oncology and **Becky Chan, M.D., Ph.D.** Neonatology, on their recent faculty appointments.

Scott has been with the Wells Center for a number of years as a Fellow in Pediatric Hematology/Oncology and later as a Post-Doc and lecturer.

His current research interests include treatment of nonmalignant genetic blood disorders by transplantation of gene-corrected hematopoietic stem cells.

Becky worked as a Post-Doc in Merv Yoder's lab a few years before becoming faculty. During her Post-Docs years she was impressed with the collaboration efforts and collegiality of all the investigators. This is what led her to select the Wells Center as the place to commit her research.

Her lab is studying how mutations in the Shp-2 protein induce human diseases including leukemias, lymphomas, and congenital heart abnormalities.

We congratulate and welcome each of you. We hope that you reach your scientific goals while here at the Wells Center.

So, let's recap all that has happened during 2003. Two veterans of Wells moved on, one investigator and his lab moved on, we gained several faculty, promoted two Post-Doc's, added administrative and facility staff, acquired more than 14,000 square feet of space, gave a facelift to our Riley location, relocated faculty and their labs and *yet* retained our sanity and sense of mission during everything. Not a bad year. Hmm, wonder what's up for 2004?!

HIGH MARKS FOR NIH FUNDING

Dr. Richard Schreiner, Chairman for the Department of Pediatrics here at IU, recently announced that the Indiana University School of Medicine Department of Pediatrics ranked number 13 in NIH funding to pediatric departments for 2002. This is an improvement from number 17 in 2001 and number 50 in 1990.

He extends his congratulations to all faculty who have been awarded grants, to faculty who participate in research and to faculty who conduct clinical and educational work that makes it possible for the other faculty to spend their time in these important research endeavors.

Way to go researchers!!!

WELLS CENTER RECENT PUBLICATIONS

SJ Conway. 2003. Role of *Pax3* and *PDGF α* receptor in skeletal morphogenesis and facial clefting. In: *The Skeleton: Biochemical and Molecular Interactions in Development and Homeostasis*. (Edited by Massaro, E.J. and Rogers, J.), Humana Press, USA.

Kim, CY, CC Marchal, J Penninger, **MC Dinauer.** 2003. The hematopoietic Rho/Rac guanine-nucleotide exchange factor Vav1 regulates N-formyl-Methionyl-Leucyl-Phenylalanine-activated neutrophil functions. *J Immunol* 171:4425-4430.

Sadat, MA, N Pech, SO Saulnier, BA LeRoy, JP Hossle, M Grez, **MC Dinauer.** 2003. Long term high-level reconstitution of NADPH oxidase activity in murine X-CGD using a bicistronic vector expressing gp91^{phox} and DLNGFR cell surface marker. *Hum Gene Ther* 14:651-666.

Glogauer, M, CC Marchal, F Zhu, A Worku, B Clausen, I Foerster, P Marks, GP Downey, **MC Dinauer,** DJ Kwiatkowski. 2003. Rac1 deletion in mouse neutrophils has selective effects on neutrophil functions. *J Immunol* 170:5652-5657.

Bonini, C, M Grez, C Traversari, F Ciceri, S Markt, G Ferrari, **MC Dinauer,** M Sadat, A Aiuti, S Deola, M Radrizzani, A Hagenbeek, J Apperley, S Ebeling, A Martens, HJ Kolb, M Weber, F Lotti, A Grande, E Weissinger, JA Bueren, M Lamana, JHF Falkenburg, MHM Heemskerk, T Austin, S Kornblau, F Marini, C Benati, Z Magnani, S Cazzaniga, S. Toma, C Gallo-Stampino, M Introna, S Slavina, PD Greenberg, M Bregni, F Mavilio, C Bordignon. 2003. Safety of retroviral gene marking with a truncated NGF receptor. *Nat Med* 9:367-369.

Tan, B L, Hong, L, Munugalavadla, V, **R Kapur.** 2003. Functional and biochemical consequences of abrogating the activation of diverse signaling pathways in Kit: Role for Src kinase pathway in Kit induced cooperation with Epo-R. *Journal of Biological Chemistry* 278(13): 11686-11695.

Tan, B L, Yazicioglu, M N, **DA Ingram,** McCarthy, J, Borneo, J, Williams, DA, **R Kapur.** 2003. Genetic evidence for convergence of c-Kit and $\alpha 4$ integrin-mediated signals on class IA PI-3Kinase and Rac pathway in regulating integrin directed migration in mast cells. *Blood*, 101:4725-4732.

Huddleston, H, Tan, B, Yang, FC, Wenning, M J, Orazi, A, **MC Yoder, R Kapur, DA Ingram.** 2003. A functional p85a gene is required for normal murine fetal erythropoiesis. *Blood*, 102:142-145.

Chandra, S, **R Kapur,** Chuzhanoya, N, Summey, V, Prentice, D, Barker, J, Cooper, DN, D A Williams. 2003. A rare complex DNA rearrangement in the murine Steel gene results in exon duplication and a lethal phenotype. *Blood*, 102:3548-3554. (Chosen for the cover of November 15th, 2003 issue of the Journal Blood).

Woods EJ, Liu J, **KE Pollok,** Hartwell J, Smith FO, Williams DA, **MC Yoder,** Critser JK. 2003. A theoretically optimized method for cord blood stem cell cryopreservation. *J Hematother Stem Cell Res* 12:341-350.

Capelin, E, D'Osualdo, A, Bogliolo, M, Xu, Y, **MR Kelley,** Frosina, G. 2003. Repair of 8 oxoguanine in mammalian cells expressing the Drosophila S3 ribosomal/repair protein. *Teratogen. Carcin. Mutagenesis*, 23 Suppl 1:113-121.

Druzhyna, N M, Hollensworth, S B, **MR Kelley,** Wilson, G L, LeDoux, S. 2003. Targeting human 8-oxoguanine glycosylase to mitochondria of oligodendrocytes protects against menadione-induced oxidative stress. *Glia* 42(4):370-378.

Cappelli, E, D'Osualdo, A, Bogliolo, M, **MR Kelley,** Frosina, G. 2003. Drosophila S3 ribosomal protein accelerates repair of 8 oxoguanine performed by human and mouse cell extracts. *Environ Mol Mutagen* 42(1):50-8.

Roth, T J, Xu, Y, Luo, M, **MR Kelley.** 2003. Human yeast chimeric repair protein protects mammalian cells against alkylating agents: Enhancement of MGMT protection. *Cancer Gene Ther* Aug;10(8):603-10.

W Shen, **E Liechty.** 2003. Digestion and Absorption. In: *The Neonatal Pig. Gastrointestinal Physiology and Nutrition*, edited by Ruo-Jun Xu & Peter Cranwell. Nottingham University Press, United Kingdom.

Leurs, C, Jansen, M, **KE Pollok,** Heinkelein, M, Schmidt, M, Wissler, M, Lindemann, D, Von Kalle, C, Rethwilm, A, Williams, D A, and Hanenberg, H. 2003. Comparison of three retroviral vector systems for the transduction of NOD/SCID repopulating CD34+ CB cells. *Human Gene Therapy* 14: 509-519.

PUBS CONTINUED

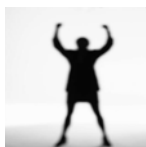
KE Pollok. 2003. In vivo protection of hematopoietic cells from alkylator-mediated DNA damage. *Current Hematology Reports*. 2:341-347. (non-peer review)

Huddleston H, Tan B, Yang FC, White H, Wenning MJ, Orazi A, **MC Yoder, R Kapur, DA Ingram.** 2003. A functional *p85* gene is required for normal murine fetal erythropoiesis. *Blood* 102(1):142-145.

Sutton TA, Mang HE, Campos SB, Sandoval RM, **MC Yoder,** Molitoris BA. 2003. Injury of the renal microvascular endothelium alters barrier function following ischemia. *Am J Physiol Renal Physiol* 285:F191-F198.

Ferkowicz M, Li W, Starr M, Xie X, Morrison P, Johnson S, Shelley C, **MC Yoder.** 2003. CD41 expression defines the onset of primitive and definitive hematopoiesis in the mouse embryo. *Development* 130(18):4393-4403.

RJ Chan, Johnson SA, Li Y, **MC Yoder,** Feng GS. 2003. A definitive role of Shp-2 tyrosine phosphatase in mediating embryonic stem cell differentiation and hematopoiesis. *Blood* 102(6):2074-2080.



FACILITY FACTS

- A qualified person is available via pager 24 hours a day, 7 days a week.
- Please refer to the facilities section of the bulletin boards in Wells East and Wells West to see who is on call.
- This information is also posted on the Wells Center web page at www.iupui.edu/~wellsctr.

Pager Numbers

- Karen Correll, Wells Center Associate Director for Research Operations: 312-1096
-
- Facilities On-Call Pager: 312-1670, evenings, weekends and holidays.

OFFICE CLOSINGS

The Wells Center *Administrative* Offices will be closed on the following days. Note: there will be no mail, federal express, or UPS pick-ups or deliveries on these days.

During these closings please . . .

- Schedule the delivery of your lab supplies around these dates.
- Keep your keys and I.D. badge with you at all times.

December 25-26, 2003, Christmas
January 1, 2004, New Year's Day
January 19, 2004, Martin Luther King Day
April 9, 2004, Campus Holiday
May 31, 2004, Memorial Day
July 4, 2004, Independence Day

CALENDAR OF EVENTS

- December 18, 2003: International Pitch-in
- March 7-8, 2004: Molecular Medicine in Action Day (MMIA)
- June 7-August 13, 2004: Summer Internship Program.
- August 13, 2004: Last formal day for Summer Internship Program & Summer Internship poster session.

Newspaper Team

Executive Editor: Laura Oxford
Assistant Editors: Mary Dinauer
Mark Kelley
Donna Fischer
Page Layout: Laura Oxford
Proofreader: Becky Cole
Admin Assistant: Chris Lindley

Please submit comments and news to:
wellsadm@iupui.edu
(317) 278-2856 or (317) 278-9298 (facsimile)

Visit our web site at:
www.iupui.edu/~wellsctr

OUT & ABOUT

MEETINGS, SEMINARS, SYMPOSIA

Simon Conway

- Simon Conway, Manabu Maeda, Paige Kneer, and Andrew Lindsley attended the Weinstein Cardiovascular Development Conference, Cambridge, MA, May 2003.
- Simon Conway, Manabu Maeda, Paige Kneer and Andrew Lindsley attended the 43rd Annual Midwest Developmental Biology Meeting & Singer Symposium, Kansas City, Missouri, June 2003. Manabu Maeda MD and Andrew Lindsley gave well received platform presentations.
- Attended NIH Study Section for Cardiovascular Development in October 2003 in Maryland.

Mary Dinauer

- Gordon Conference, on Oxidative Stress and Disease, Ventura, CA. "Role of NADPH oxidase in host defense and inflammation." March 2003.
- The University of Chicago Pritzker School of Medicine 75th Anniversary Reunion, Rising Stars Symposium, Chidago, IL. "Superoxide Production by Neutrophils: Genetic Defects in Chronic Granulomatous Disease, Mouse Models, and Gene Therapy." June 2003.
- American Society for Microbiology 43rd Inter-science Conference on Antimicrobial Agents and Chemotherapy Meeting, Chicago, IL. "The NADPH Phagocyte Oxidase and Regulation of Inflammation." September 2003.
- 36th Annual Meeting of the Society for Leukocyte Biology, Philadelphia, PA. "Unraveling Inflammation, NADPH Oxidase and Inflammation: Studies in Murine X-Linked Chronic Granulomatous Disease." October 2003.

Loren Field

- Attended NIH Study Section for Cardiovascular Development in Maryland. October 2003.

Reuben Kapur

- *Invited speaker*, Department of Molecular Biology & Biochemistry, Indiana University School of Medicine. November 2003.

Mark Kelley

- National Cancer Institute Special Emphasis Panel: Prevention Research and Epidemiology. March 2003.
- AIRC (Associazione Italiana per la Ricerca sul Cancro) grant reviewer: National grant reviews for Italian bioscience. March 2003.
- National Cancer Institute Special Emphasis Panel: Prevention Research and Epidemiology. July 2003.

Jeff Travers

- Attended the International Investigative Dermatology meeting in Miami, FL. His lab also attended and presented five abstracts and participated in many scientific activities. May 2003.3

Merv Yoder

- *Visiting scientist*, Oregon Health Sciences Center, Portland, Oregon. "Bringing blood to life in the murine embryo." June 2003.
- *Featured speaker*, Phi Zeta Omicron Honor Society of Veterinary Medicine, Purdue University School of Veterinary Medicine, West Lafayette, IN. "Animal models of human disease: Shp-2 mutant mice and patients with Noonan's syndrome." April 2003.
- *Selected speaker*, Indiana Center for Vascular Biology and Medicine Annual Retreat, Indianapolis, IN. "Isolation of circulating endothelial cells from human peripheral blood." March 2003.
- *Invited speaker*, Seventh Annual Jerry Elliot Memorial Lecture, Southeastern Association of Neonatologists, 17th Annual conference, Marco Island, FL. "The perils and promise of embryonic stem cell research." May 2003.
- *Invited lecturer*. Southeastern Association of Neonatologists, 17th Annual conference, Marco Island, FL. "Cord blood: unwanted material or renewable treasure." May 2003.
- The John I. Perlstein Lectureship, Department of Pediatrics, University of Louisville School of Medicine, Louisville, KY. "What every pediatrician should know about stem cells." August 2003.

SEMINAR SCHEDULES

PEDITRIC FACULTY RESEARCH SEMINARS

Second Thursday of each month, noon to 1p.m.
Cancer Research Institute Auditorium, R4-101

December 11, 2003
Cancelled due to ASH

January 8, 2004
Kathy Bethin, M.D., PhD
"Analysis of Uterine Genes in Normal
and Preterm Labor"

February 12, 2004
Simon Conway, PhD
"Making and Breaking the Mouse Embryo Heart"

March 11, 2004
Eddy Srour, PhD
"Murine Pluripotent Stem Cells"

April 8, 2004
Laura Haneline, M.D.
TBA

May 13, 2004
Wendy Lee, M.D.
"The Function of IGF-I in a Developing Brain"

June 10, 2004
Merv Yoder, M.D.
TBA

COMBINED SEMINAR SERIES

Wednesdays, 4p.m. to 5p.m.
Cancer Research Institute Auditorium, R4-101

December 10, 2003
Michael Colvin, M.D., Director,
Duke Comprehensive Cancer Center
"Enzymatic Activity, Isolation Techniques,
and Differentiation Properties of
Hematopoietic Stem Cells"
Host: Stephen Williams, M.D.

December 17, 2003
Thomas J. MacVittie, Ph.D., Professor, Depts. of
Radiation Oncology and Pathology
University of Maryland,
Greenebaum Cancer Center
"Ex Vivo Expansion of HSCs?: The Nonhuman
Primate as a Pre-clinical Model"
Host: Mervin Yoder, M.D.

December 24, 2003
Holiday – No Seminar

December 31, 2003
Holiday – No Seminar

Additional information will be posted to
IUCC.iu.edu/intranet



FACULTY RETREAT

There weren't any log cabins or fishing poles, but nonetheless, on November 7, the Wells Center faculty did manage to get away for a day to the Omni Severin to discuss the Wells Center mission and goals.

The retreats are normally held twice a year in downtown Indianapolis, generally in the spring and fall. The time away from campus allows Wells Center faculty to concentrate on business and science concerns, as well as promotes collaboration and discussion.

**For more information on Wells Center
Investigators, please visit our web site at
www.iupui.edu/~wellsctr**

Herman B Wells Center for Pediatric Research
Weekly Floor Meeting Schedule (2004)
Cancer Research Institute, R4-101
Thursdays, 12:00 – 1:00 p.m.

If you are unable to present at your appointed time,
it is **YOUR** responsibility to switch with someone else on the schedule. Please inform Joseph Ruiz
(jcr Ruiz@iupui.edu) or Reuben Kapur (rkapur@iupui.edu) of the schedule change.

Jan. 8	Kathy Bethin Pediatric Faculty Research Seminar	Apr. 8	Laura Haneline Pediatric Faculty Research Seminar
Jan. 15	Barry Katz (Bioinformatics Workshop) David Caldwell (MK)	Apr. 15	Jin Zhong (WL) Hisako Nakajima (LF)
Jan. 22	Rosemary Steinmetz (OP) Weiguo Yao (WL)	Apr. 22	Josh Dowell (LF) Gang-Ming Zou (MY)
Jan. 29	Paige Kneer (SC) Qiwei Zhang (JT)	Apr. 29	Kristin Hall (ES) Li Hong (RK)
Feb. 5	Mark Edwards (MY) Su Huang (WL)	May 6	Jill Butler (DS) Wuqiang Zhu (LF)
Feb. 12	Simon Conway Pediatric Faculty Research Seminar	May 13	Wendy Lee Pediatric Faculty Research Seminar
Feb. 19	Michael Rubart (LF) Zhuang Chen (WS)	May 20	Suzanne Young (DS) Chang Il Suh (MD)
Feb. 26	Jaime Case (ES) Meihua Luo (MK)	May 27	Jayne Allen (WC) Veerendra Munugalavadla (RK)
Mar. 4	Samantha Ciccone (WC) Binghui Li (KC)	June 3	Weihua Shen (EL) Hidehiro Nakajima (LF)
Mar. 11	Eddy Srour Pediatric Faculty Research Seminar	June 10	Merv Yoder Pediatric Faculty Research Seminar
Mar. 18	Mark Soonpaa (LF) Nicos Mousdicas (JT)	June 17	Tia Harvey (MK) Nerrisa Kreher (OP)
Mar. 25	Andrew Lindsley (SC) Wenyu Ming (MD)	June 24	Jeong-Heon Lee (DS) Ki Woong Sung (ES)
Apr. 1	Feng-Chun Yang (WC) Mark Ferkowicz (MY)	July 1	Hanying Chen (WS) Shanbao Cai (KP)

NOTE: Initials within brackets denote the laboratory affiliation of the speaker.

KB	Kathy Bethin	MD	Mary Dinauer	MK	Mark Kelley	WS	Weinian Shou
DB	David Boyle	LF	Loren Field	WL	Wendy Lee	DS	David Skalnik
BC	Becky Chan	AF	Anthony Firulli	EL	Ed Liechty	ES	Eddy Srour
KC	Kristin Chun	SG	Scott Goebel	OP	Ora Pescovitz	RT	Rob Tepper
WC	Wade Clapp	LH	Laura Haneline	KP	Karen Pollok	JT	Jeff Travers
SC	Simon Conway	RK	Reuben Kapur	JR	Joe Ruiz	MY	Merv Yoder

UNDERSTANDING THE ROLES OF THE WELLS CENTER CORE SUPPORT TEAM

JEAN MERCER: Associate Director for Administration; grants coordinator; Wells Center financial manager. R4 302E, 4-7427; pager 312-2539; jemerger@iupui.edu.

DONNA FISCHER: Manager of Human Resources/Administration; IU Human Resources and International Affairs liaison; contact for keys, pagers, business cards and phone issues. R4 302D, 8-0746; pager 312-1583; dfischer@iupui.edu.

KAREN CORRELL: Associate Director for Research Operations; Facilities Coordinator; repairs to all facility equipment, Wells Center labs and offices. R4 466; 4-8965; pager 312-1096; kscorrel@iupui.edu.

LAURA OXFORD: Assistant Business Manager; post award management; travel authorization and audit, reimbursements; liaison to Accounting and Purchasing; Editor of the Wells Center Newsletter. R4 302B, 8-2856; loxford@iupui.edu.

BECKY COLE: Grant Specialist; Pre Award Management; Research & Sponsored Programs liaison; monitors & updates faculty CV's and NIH Biosketches. R4 302A, 8-8504; rebcole@iupui.edu.

JAMES PAYNE: Computer technical support; Handles all computer and imaging room issues, RI 2660; 8-3355; pager 312-1574; jpayne@iupui.edu.

SHARI UPCHURCH: Administrative Assistant to Mary Dinauer. R4 402D; 4-8645, shupchur@iupui.edu.

KIM CUNNINGHAM: Purchasing Coordinator/Administrative Secretary; Purchasing Assistant for the Wells Center; Wells East receptionist and administrative support; Keeper of general office and hospitality supplies for Wells East. R4 402; 8-0543; kcunning@iupui.edu.

CHRIS LINDLEY: Administrative Secretary; Wells West receptionist and administrative support; schedules all of the Wells Center Conference Rooms (Wells West, East-3 and East-4); keeper of general office and hospitality supplies for Wells West; Wells Center contact for the Combined Seminar Series, Pediatric Faculty Research Seminar and the Weekly Floor meeting. RI 2600; 4-8900; chlindle@iupui.edu.

NICOLE MEUNIER: Administrative student worker; nmeunier@iupui.edu.

AMBER BINNION: Administrative student worker; albinnio@iupui.edu.

ERNEST ATWOOD: Wells East 4 Media Prep (autoclave glassware, hazardous waste disposal, liquid nitrogen, CO2 tanks). R4 456; 4-8949; pager 312-1590; eatwood@iupui.edu.

ROBERT HOLLINS: Wells West Media Prep (autoclave glassware, hazardous waste disposal, liquid nitrogen, CO2 tanks). RI 2645; 4-8943; pager 312-1591; rhollins@iupui.edu.

CHARLES WADE: Wells East 3 Media Prep (autoclave glassware, hazardous waste disposal, liquid nitrogen, CO2 tanks). Pager 312-2098; crwade@iupui.edu.