



**IUPUI**  
INDIANA UNIVERSITY - PURDUE UNIVERSITY INDIANAPOLIS

# IUPUI Students!

Scott E. Evenbeck  
Dean, IUPUI University College

IUPUI Staff Council  
February 21, 2007



# Adults with College Degrees

1. Where does Indiana rank nationally for the proportion of adults age 25 and over who have baccalaureate degrees?
  - a) 6<sup>th</sup>
  - b) 16<sup>th</sup>
  - c) 26<sup>th</sup>
  - d) 36<sup>th</sup>
  - e) 46<sup>th</sup>



# Graduation Rate for Males

2. What is the Indianapolis Public Schools graduation rate for black males?
- a) 73%
  - b) 63%
  - c) 53%
  - d) 43%
  - e) 33%**

The Schott Foundation for Public Education, 2004



# Graduation Rate for Males

3. What is the Indianapolis Public Schools graduation rate for white males?
- a) 63%
  - b) 53%
  - c) 43%
  - d) 33%
  - e) 23%**

The Schott Foundation for Public Education, 2004



# Family Income and Higher Education Opportunity 1970–2005

In 2005, by age 24, 28% of students had completed baccalaureate degrees.

<b>Income</b>	<b>Percent graduated</b>
Up to \$36,539	
Between \$36,540 to \$64,108	
Between \$64,109 to \$98,433	
Greater than \$98,433	



# Family Income and Higher Education Opportunity 1970–2005

In 2005, by age 24, 28% of students had completed baccalaureate degrees.

<b>Income</b>	<b>Percent graduated</b>
Up to \$36,539	12.3%
Between \$36,540 to \$64,108	16.6%
Between \$64,109 to \$98,433	27.9%
Greater than \$98,433	72.6%



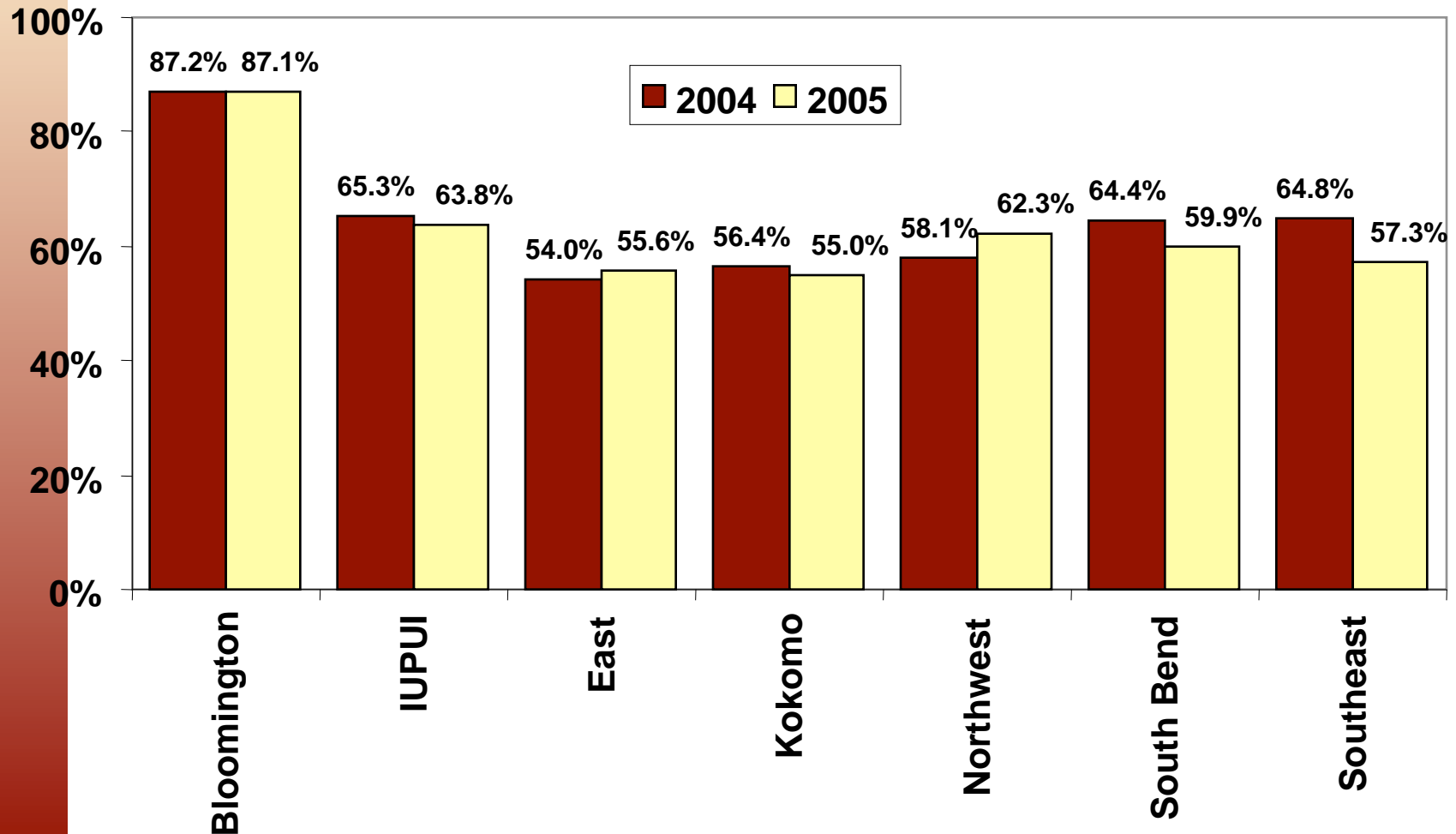
# Student Progress

4. What percentage of Fall 2005 full-time beginners at IUPUI returned for their second year of classes?
- a) 63.2%
  - b) 63.8%      1.5 lower than 2004!
  - c) 64.8%
  - d) 65.3%
  - e) 71.2%      Fall 2005 Entering Cohort

Source: University Reporting & Research: official reports are available at <http://www.indiana.edu/~urr>

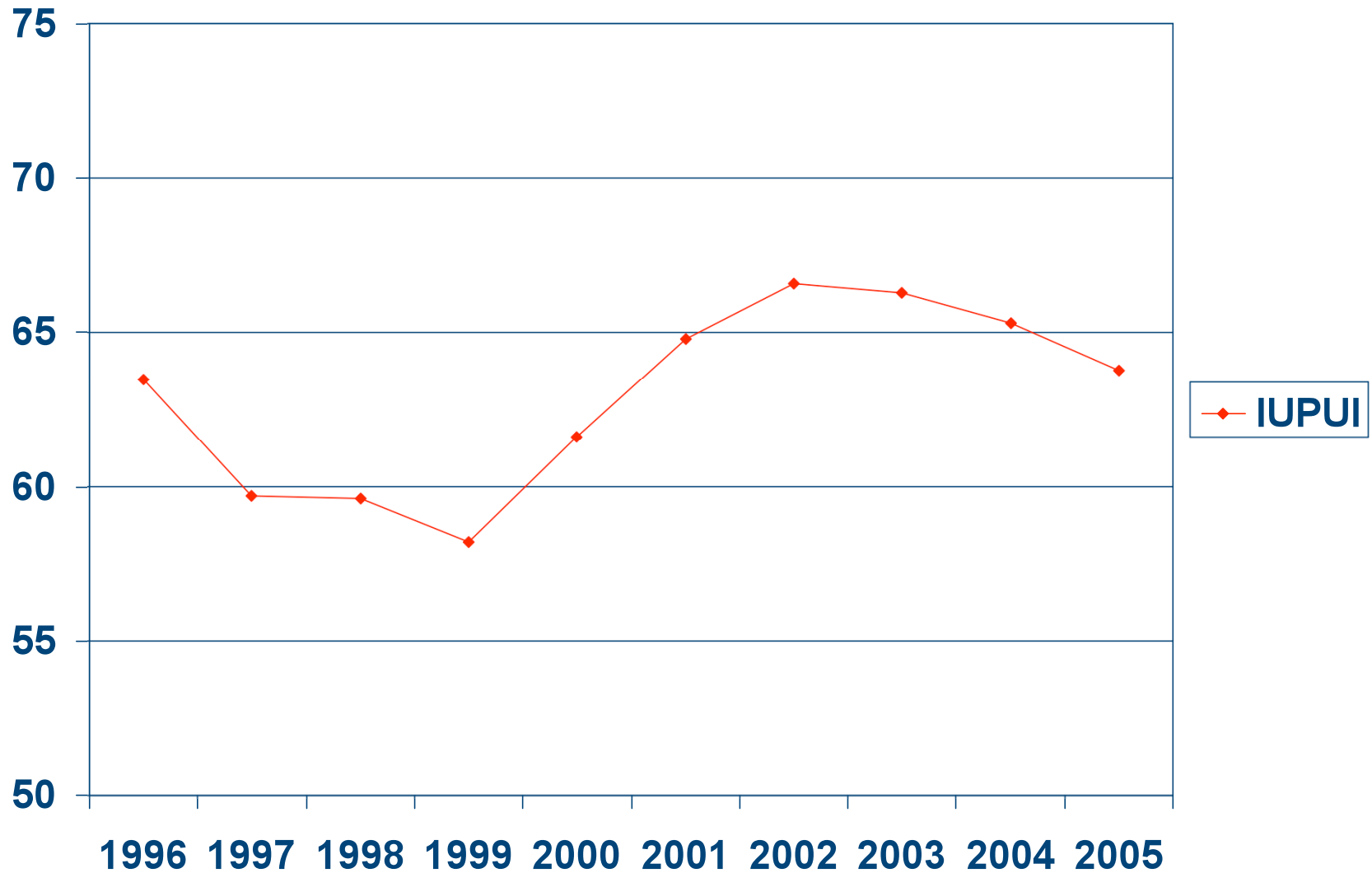


# One-Year Retention Changes





# IUPUI Ten Year Retention Trend





# Student Progress

5. What percentage of full-time beginners at IUPUI graduate from any IU campus within six years?

a) 17%

b) 21%

c) 25%

About 1 of 4!

d) 35%

e) 43%

Fall 1999 Entering Cohort

Source: University Reporting & Research: official reports are available at <http://www.indiana.edu/~urr>



# Peer Institution Graduation Rates

## Six Year Graduation Rates of Full-Time Beginners African American and Overall Students: Peer Comparisons

	African American	Overall
University of Alabama, Birmingham	31%	36%
University of Cincinnati	23%	41%
SUNY at Buffalo	37%	59%
Temple University	57%	58%
University of Illinois, Chicago	37%	50%
Wayne State University	11%	33%
IUPUI	17%	25%



# Factors That Threaten Persistence and Graduation from College

- ❖ **Academically underprepared for college-level work**
- ❖ **First-generation college student**
- ❖ **Gap between high school and college**
- ❖ **30+ hours working per week**
- ❖ **Part-time enrollment**
- ❖ **Single parent**
- ❖ **Financially independent**
- ❖ **Children at home**
- ❖ **Lack of institutional and goal commitment**
  - ❖ **George Kuh, 2006**



# Student Profile

6. What percent of IUPUI full-time first-time students are admitted conditionally?

a) 17%

b) 27%

c) 32%

Lower than it once was!

d) 47%

e) 57%



# Academic Performance

7. What percentage of Fall 2005 FT, FT conditionally admitted students earned a GPA below a 2.0 during their first semester?

a) 17%

b) 26%

c) 38%

d) 43%

More than we would like!

e) 56%



# Retention of Conditional Admits

8. What percentage of first-time, full-time 2005 conditionally admitted students returned for their second year of classes?

a) 38%

b) 46%

c) 52%

Not what we hope for!

d) 60%

e) 68%

Source: University Reporting & Research: official reports are available at <http://www.indiana.edu/~urr>



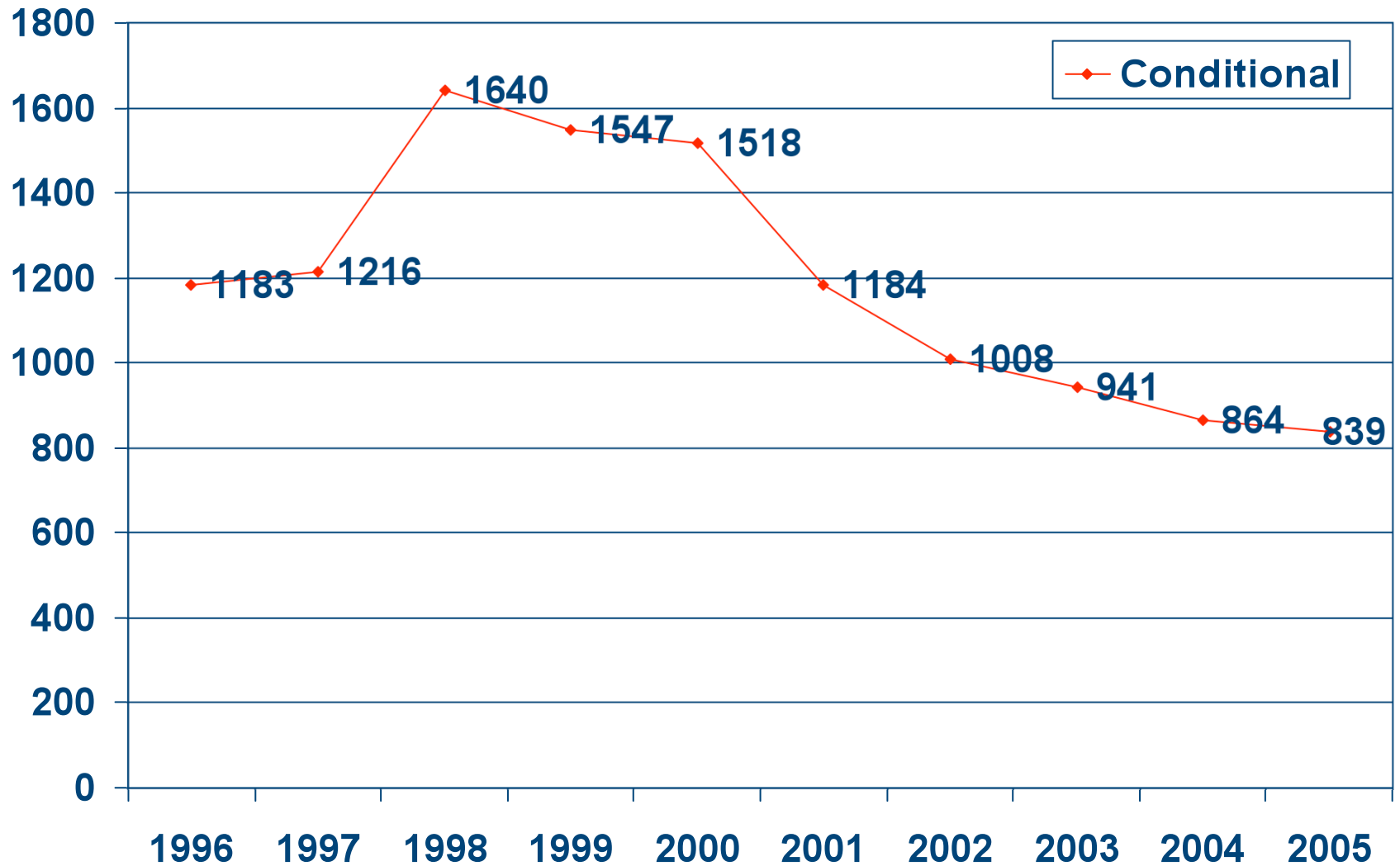
# Graduation Rates of Conditional Admits

9. What is the six-year graduation rate for conditionally admitted students (1999 cohort)?
- a) 10%
  - b) 15%** Lower than we wish!
  - c) 22%
  - d) 27%

Source: University Reporting & Research: official reports are available at <http://www.indiana.edu/~urr>

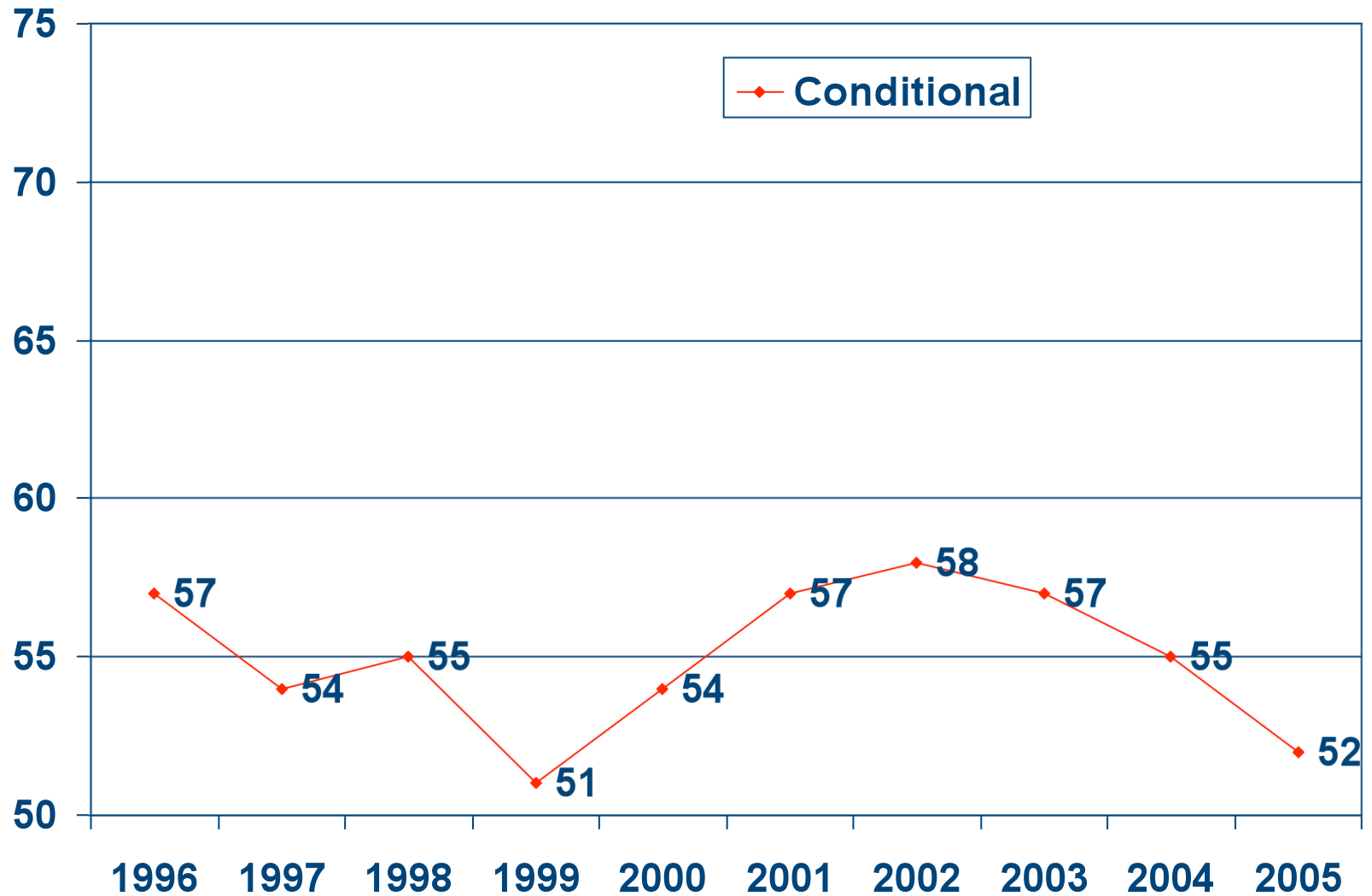


# IUPUI Number of Conditional Admits Trend





# IUPUI Ten Year Retention Trend for Conditional Admits





# First Generation Status

10. What percentage of Beginning Freshmen are First Generation Students?

a) 25%

b) 37%

c) 61%

majority!

d) 85%

Fall 2005 Beginning Freshmen Entering Student Survey Results



# First-Generation Student Progress

11. What was the one-year retention rate for FT, FT 2005 first-generation students?

a) 45%

b) 50%

c) 59% Lower than you thought?!!

d) 64%

e) 72%



# Student Progress

12. What was the one-year retention rate for FT, FT 2005 first-generation students who participated in the Summer Academy: Bridge Program?

- a) 50%
- b) 59%
- c) 64%
- d) 77%

Good News!!!



# Time Commitments

13. How many average hours did FT, FT First-Generation Students expect to work for pay during their first semester?

- a) 10
- b) 15
- c) 20
- d) 30

Compared to 17 hours!



# IUPUI FT, FT First Generation Students

- Plan to work more hours
- Lower one-year retention rates
- Higher DWF rates (31% compared to 22% for non-first generation students)
- Higher percentage earned below a 2.0 during first semester (34% compared to 22% for non-first generation students)
- Lower cumulative GPAs (2.19 compared to 2.58 for non-first generation students)
- A substantially higher percentage reported that they needed help with financial aid (80%) compared to non-first-generation students (62%)



# Student Profile

14. What percentage of 2005 first-time, full-time students were African American?

- a) 3%
- b) 7%
- c) 11%
- d) 17%
- e) 22%



# Student Profile

## Fall 2005 First-Time, Full-Time

	<b>N</b>	<b>Percent</b>
American Indian/Alaska Native	8	.04%
Asian	63	3%
African American	251	11%
Hispanic/Latino	69	3%
International	45	2%
Other American	23	1%
White	1699	78%
Refused to Answer	25	1%
Missing	10	5%



# Student Progress

15. What percentage of first, time full-time 2005 IUPUI African American students returned for their second year of classes?

a) 43.8%

b) 52.5%

Not Good News!!!

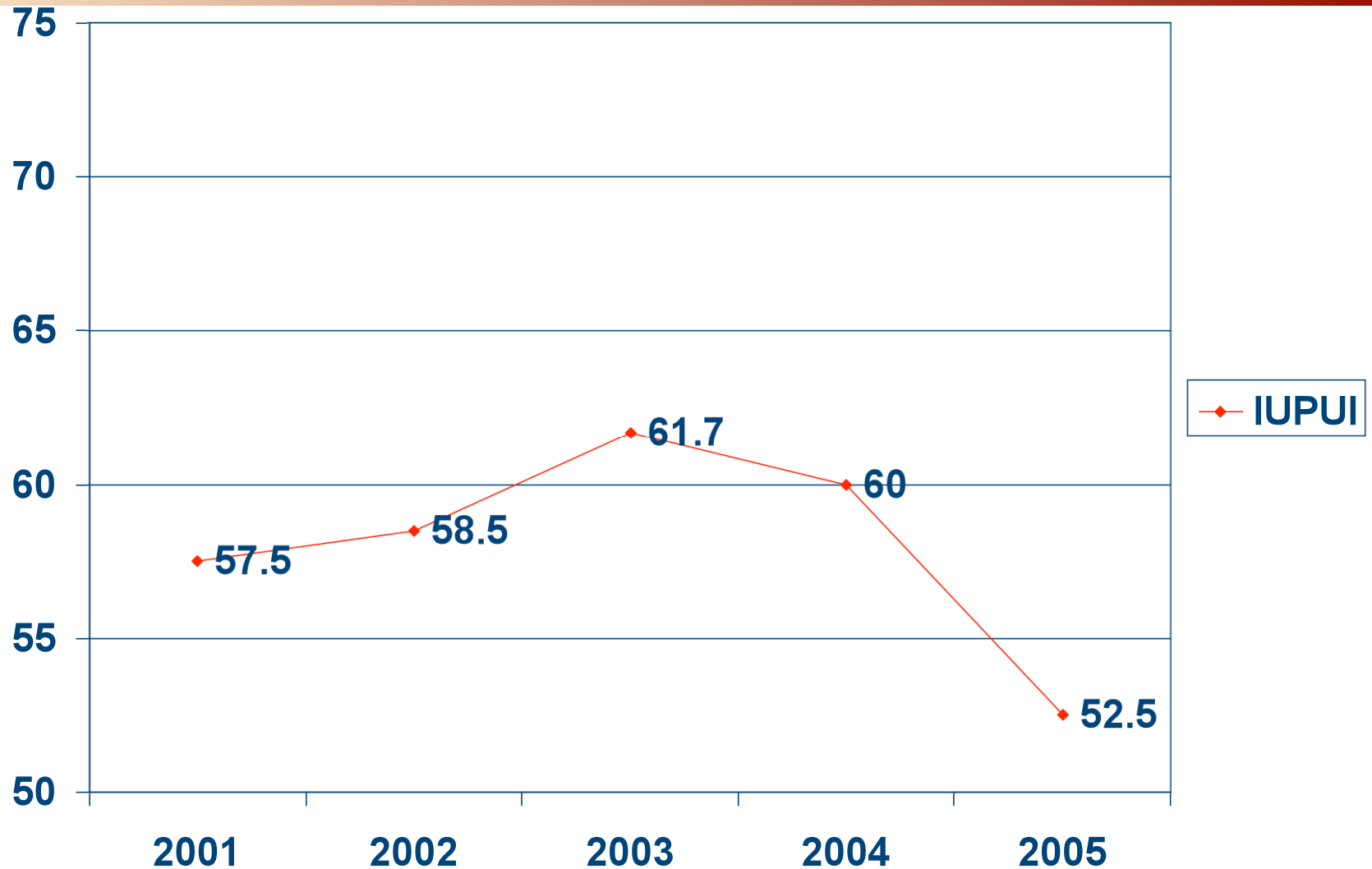
c) 61.7%

d) 68.9%

Source: University Reporting & Research: official reports are available at <http://www.indiana.edu/~urr>



# African American Five Year Retention Trend



Source: University Reporting & Research: official reports are available at <http://www.indiana.edu/~urr>



# IUPUI Fall 2005 FT, FT African American Students

- 78% reported that they were first-generation college students
- 53% were admitted conditionally
- 58% were men
- 47% had first semester GPAs below a 2.0
- Cumulative GPA was 1.83 compared to 2.43 for “all other students.”
- Planned to work more hours (20.17) for pay compared to “all others” group (18.63).
- More likely to live in campus housing (33%) compared to all others (23%).

# Student Profile

16. What percentage of IUPUI first-time, full-time students are age 25 or older?

- a) 4% (only 76 students)
- b) 12%
- c) 22%
- d) 31%



# Student Progress

17. What was the one-year retention rate for FT, FT 2005 students aged 25 or older?

a) 45%

b) 50%

c) 59%

d) 63%

**Similar to general rate!**

e) 72%



# Student Profile

18. What percentage of Fall 2005 IUPUI Freshmen were employed on-campus?

a) 1%

b) 6%      Only about 300 students!

c) 15%

d) 27%



e) 30%

Source: IMIR Profile of Undergraduate Student Employees





# Work Commitments of UCOL Undergraduates

Are you currently working for pay on-campus?

	<i>N</i>	<i>%</i>	
Yes	22	17%	
No	106	83%	

Are you currently working for pay off-campus?

	<i>N</i>	<i>%</i>	
Yes	90	71%	
No	37	29%	

Source: IMIR 2005 Continuing Student Satisfactions and Priorities Survey



# Working and Studying on Campus

Total faculty and staff at IUPUI (full- and part-time)	9,210
Faculty eligible for fee courtesy (full-time only)	2,648
Staff eligible for fee courtesy (full-time only)	4,603
Faculty and staff who used fee courtesy for AY 2006-2007	808



# Student Progress

19. What was the one-year retention rate for full-time freshmen students working on-campus?

a) 60%

b) 65%

c) 70%

d) 74%

Good News!!!

Source: IMIR Profile of Undergraduate Student Employees



# Bursar Checklist

Fall 2006 First-time Full-time Students Not Registered for Spring 2007

	<b>Number</b>	<b>%</b>
Students	2,269	100%
Bursar Checklist	579	25.5%
Amount owed	\$1,021,149	

# Student Profile

20. What percentage of first-time students spend time providing care for dependents living with them (parents, children, spouse, etc.)?

a) 12%

b) 23%

c) 34%

d) 45%

Surprised?



# Family Commitments of UCOL Undergraduates

## Marital Status

	<i>N</i>	<i>%</i>	
Single	93	72%	
Married	25	19%	
Sep/W/D	11	9%	

## Do you live with a spouse or partner?

	<i>N</i>	<i>%</i>	
Yes	35	27%	
No	94	73%	

## Do you have children at home?

	<i>N</i>	<i>%</i>	
Yes	33	26%	
No	96	74%	

Source: IMIR 2005 Continuing Student Satisfaction and Priorities Survey



# First Year Grade Performance

21. What percent of IUPUI 2005 full-time, fall beginning freshmen attain a GPA below 2.00 in their first semester?

a) 7%

b) 12%

c) 17%

d) 27%

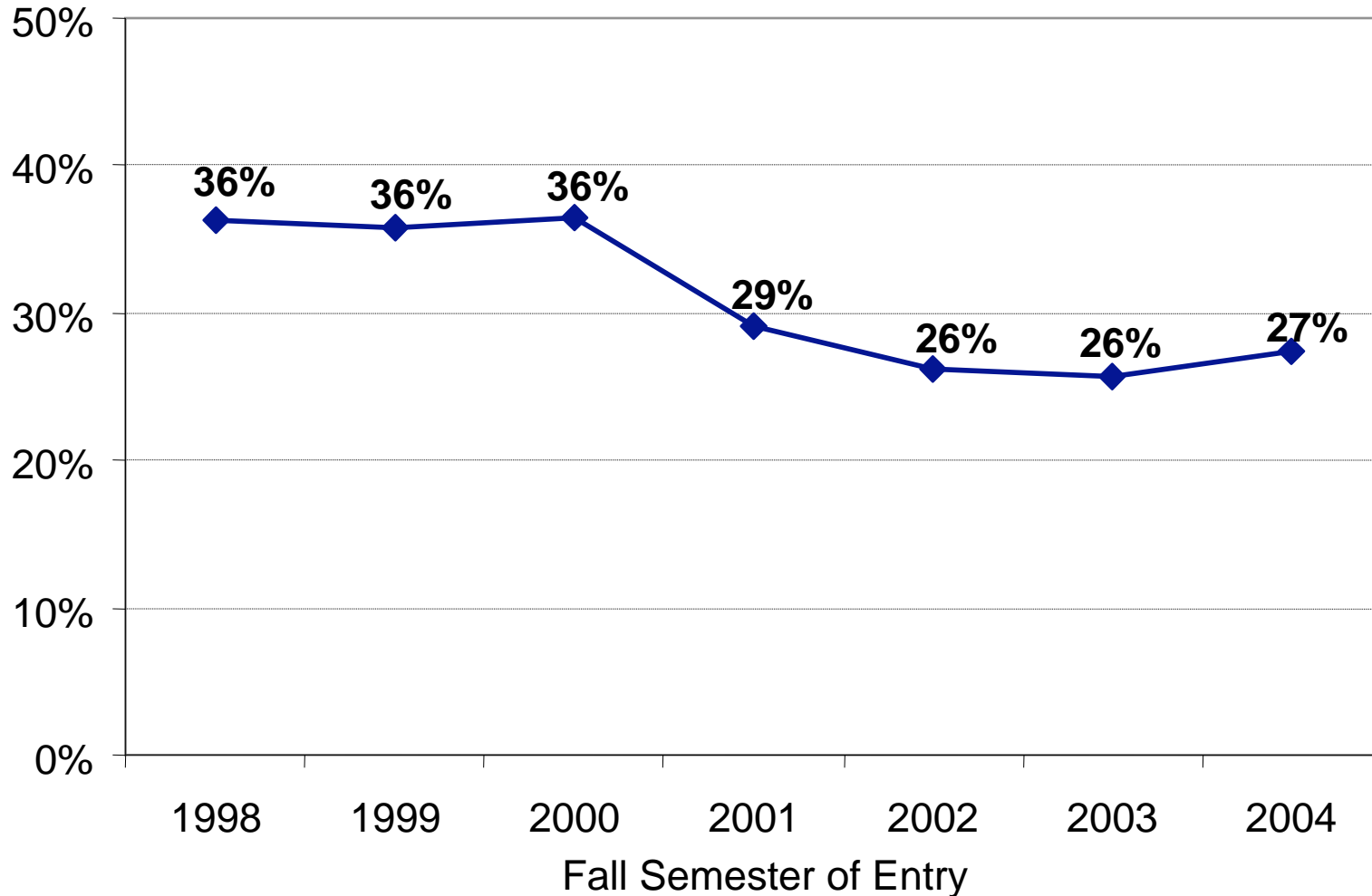
e) 30%

**Not what we hope for!**

Source: University Reporting & Research: official reports are available at <http://www.indiana.edu/~urr>



# FT Beginners with GPA < 2.00



Source: University Reporting & Research: official reports are available at <http://www.indiana.edu/~urr>

# Student Progress

22. What was the one-year retention rate among FT, FT students earning less than a 2.0 during their first semester?

a) 25%

Not Good News!!!

b) 35%

c) 45%

d) 55%



# Students' Finances

23. What percentage of students reported that they applied for financial aid?

a) 45%

b) 60%

c) 71%

d) 90%

Can you believe it?

Fall 2005 Beginning Freshmen Entering Student Survey Results

# Finances

24. What was the one-year retention rate among Fall 2005 FT, FT who had a Family Adjusted Gross income below \$50K and had 1/3 or less of their Need Met?

a) 15%

b) 29%

Can you believe it?

c) 45%

d) 55%

e) 75%

Source: Indiana University Full-Time beginner Supplementary Retention Analysis

# Finances

25. What was the one-year retention rate among Fall 2005 FT, FT who had a Family Adjusted Gross income below \$50K and had 67%+ of their Need Met?

a) 15%

b) 29%

c) 55%

d) 66%

Can you believe it?

e) 75%

Source: Indiana University Full-Time Beginner Supplementary Retention Analysis



# University College Interventions

First-Year Seminars

Summer Bridge

Themed Learning Communities

Critical Inquiry



# Most Important Aspects to Students

1. Treats me with respect.
2. Is trustworthy.
3. Provides accurate information.
4. Is knowledgeable about the general requirements needed for a degree in my school.
5. Is knowledgeable about the degree requirements needed for a degree in my school.
6. Is a good listener.
7. Treats me fairly.
8. Understands my school's (e.g., Liberal arts, business, public and environmental affairs, science, etc.) Academic rules and policies.
9. Provides adequate information.
10. Is approachable.